

ONCE UPON A CRIME



*The book group
for mystery lovers!*

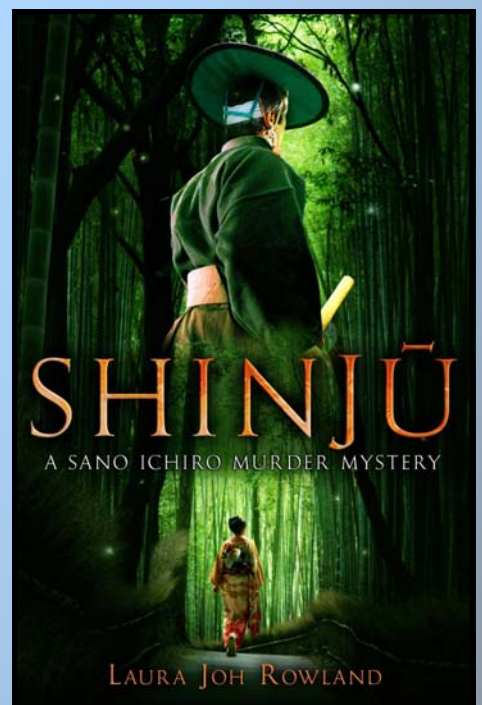
Discussion of mysteries set in historic
time periods from
King Tut to the Vietnam War

Shinju by Laura Joh Rowland

Seventeenth-century Tokyo is the setting in this murder mystery featuring Sano Ichiro the Senior Police Commander in the district of Edo. Ichiro is a samurai whose academic background puts him at odds with most of his peers.

When beautiful, wealthy Yukiko and low-born artist Noriyoshi are found drowned together in what seems to be a *shinju*, or ritual double suicide, everyone believes the cause was their forbidden love. Everyone, that is, but Sano Ichiro.

Despite the official verdict and being warned off by his superiors, Sano suspects this double death was not only a tragedy – it was murder. Risking his family's good name and his own life, Sano will search for the killer across every level of society, determined to find answers to a mystery no one else seems to want solved.



WED. FEBRUARY 9

7:00 - 9:00 PM

Peter White Public Library
Dandelion Cottage Room

www.pwpl.info or 228-9510