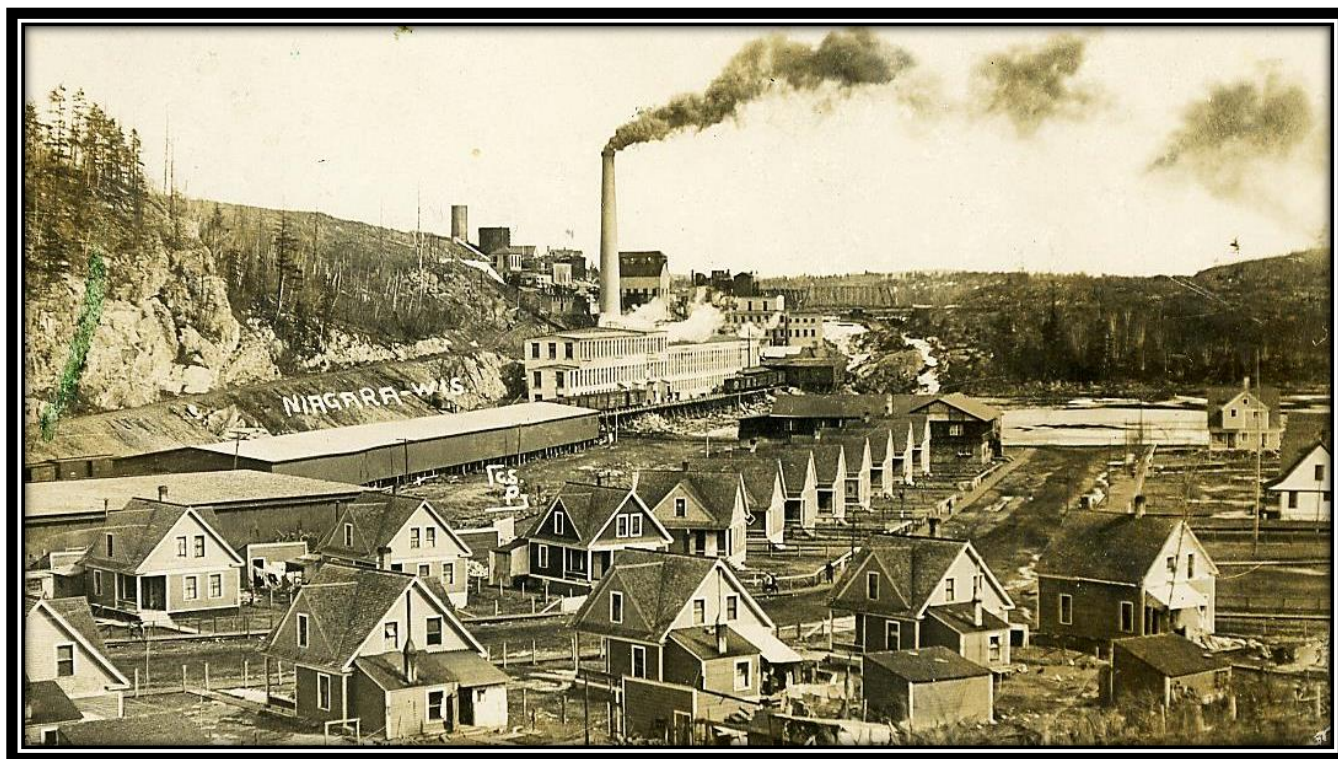


The History of My Community (Niagara, Marinette County, Wisconsin)
By Louis Krenn
(undated)



The top postcard view shows the Kimberly-Clark Paper Mill on the Menominee River and the company-built houses on the south side of Main Street, Niagara, Marinette County, Wisconsin, is postmarked August 6, 1910. The bottom postcard view, looking east, shows Main Street, including a meat market and other business establishments on the left, is postmarked November 30, 1912. [William J. Cummings Photo]

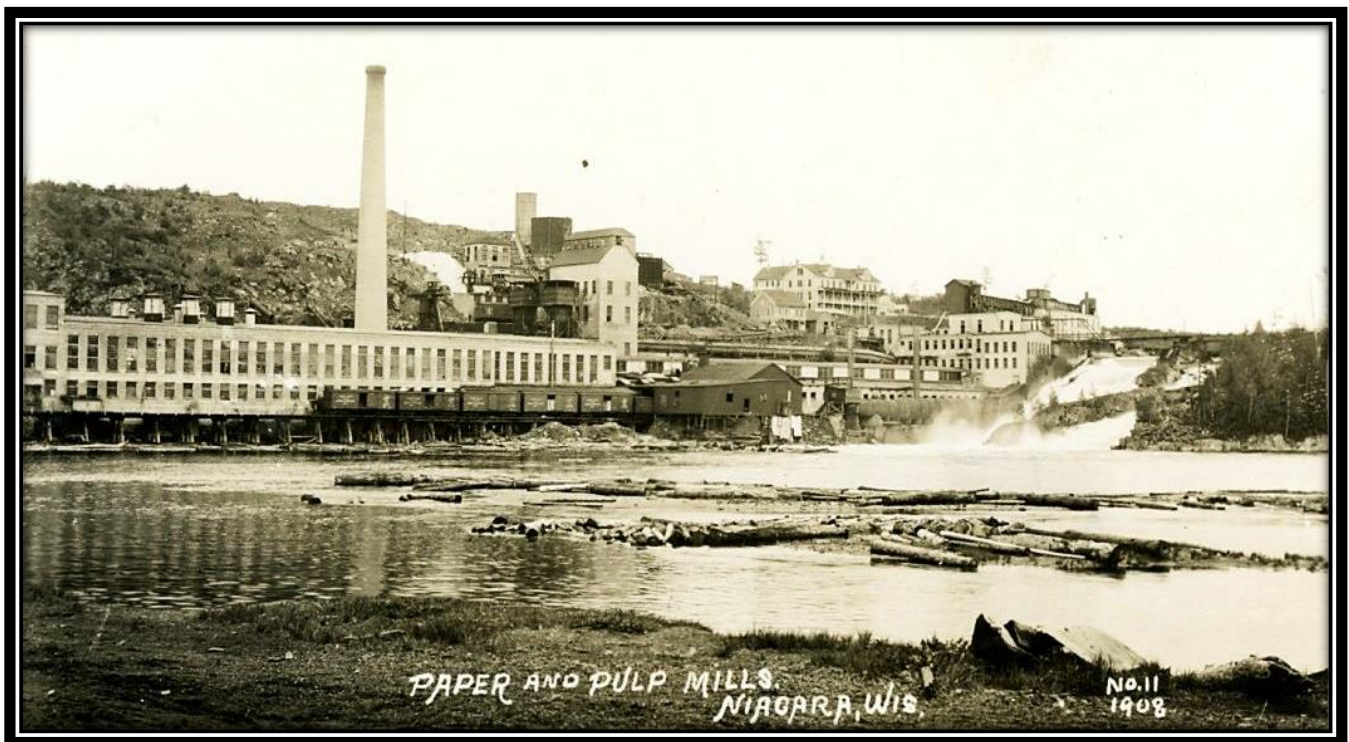
The History of My Community (Niagara, Marinette County, Wisconsin) By Louis Krenn (undated)

A man named Chappieu left his British Fur Company trading post and explored inland along the Menominee River and first viewed the beautiful country through which the river had carved its way through the rocky gorges. This was the place around which Niagara was later built.

It was nearly half a century before it was rediscovered by timber cruisers, seeking

fortunes for their employers. They had their eyes not on the beauty of the country, but on the plentiful pine timber and moved on having the first marks of civilization.

The first pulp mill was built near the Lower Quinnesec Falls in 1889 by John Stovekin. This was really the start of Niagara which had only been a lumber camp, blacksmith shop and a store.



This 1908 postcard view shows the Kimberly-Clark Paper Mill and the Grand View Hotel to the right of center above the paper mill buildings. [William J. Cummings Photo]

In 1897 the Kimberly-Clark Company became interested in the property. At that time there were only two frame houses and there were no sidewalks. There was a cedar swamp where the clubhouse is now.

John Stovekin built the first general store near the former Grand View Hotel. The post office was called Quinnesec Falls and Stovekin was the first postmaster.

The community of Niagara grew rapidly and had a population of 1,247 in 1912. On January 12, 1914, the people wanted to have the settlement known as a village.

A survey of the area was made and was found to cover 1,663 1/3 acres.

The first water and sewage system was installed in 1917. Also in 1917 Niagara got its First National Bank and power system.

The History of My Community (Niagara, Marinette County, Wisconsin)
By Louis Krenn
(undated)



This postcard view of the First National Bank in Niagara, Wisconsin, was probably taken shortly after the bank opened in 1917. *[William J. Cummings Photo]*

In 1896 the first school was opened in the upper floor of a log house belonging to John Timm. Three small windows furnished light for study. The first teacher was Miss Sadie McKenna.

In 1898 the school was moved into a frame building. Soon this building was too small, so a larger frame building was built which was later moved to the Shattuck Addition where it is still being used.

The Catholics had a priest coming from Wausaukee once a month to hold services in the log school house. The first Catholic Church was built in 1902. The Protestant church was also built in 1902. Many

improvements have been made since in our village and mill.

We must always be thankful to the early settlers for through their hard work they changed Niagara from the wilderness to the modern little city it is today.